

Thank You for Joining!

Stakeholder Comment Period: 5:00 p.m. - 6:00 p.m.

SPARK Session: 6:00 p.m. - 7:00 p.m.



SPARK Session #3 (Licensing and Regulation)  **SPARK**

SPARK Sessions Recording Disclaimer



The Department of Cannabis Regulation (DCR) is recording this meeting by audio and visual means. By continuing with this meeting, you consent to this recording and acknowledge that the Department of Cannabis Regulation owns the recording and may use or reproduce it in any manner it deems necessary. If you do not consent to being recorded, please discontinue your participation in this meeting.



Stakeholder Comment Period
5:00 p.m. - 6:00 p.m.

Stakeholder Comment Period

5:00 p.m. - 6:00 p.m.



Raise your hand (or use *9 if calling from a phone) to provide stakeholder comment.

Feel free to state your name, if interested.

Participants have two (2) minutes to speak.

Participants are allowed to speak once per Stakeholder Comment Period.

Comment collection and not an engagement method.

Comments must remain on topic.



Stakeholder Comment Period

5:00 p.m. - 6:00 p.m.



CITY OF LOS ANGELES DEPARTMENT OF
CANNABIS
REGULATION

REMINDER

BEGINNING APRIL 5, 2021

**DCR VIRTUAL PUBLIC COUNTER
SERVICE HOURS WILL CHANGE TO:**

**MONDAY - THURSDAY
10AM - 4PM
CLOSED ON FRIDAY**



Stakeholder Comment Period

5:00 p.m. - 6:00 p.m.



Raise your hand (or use *9 if calling from a phone) to provide stakeholder comment.

Feel free to state your name, if interested.

Participants have two (2) minutes to speak.

Participants are allowed to speak once per Stakeholder Comment Period.

Comment collection and not an engagement method.

Comments must remain on topic.



Stakeholder Comment Period

5:00 p.m. - 6:00 p.m.



CITY OF LOS ANGELES DEPARTMENT OF
CANNABIS
REGULATION

REMINDER

DCR CLOSED

**FRIDAY, MAY 28, 2021 -
MONDAY, MAY 31, 2021**

**IN OBSERVANCE OF
THE MEMORIAL DAY HOLIDAY**



Stakeholder Comment Period

5:00 p.m. - 6:00 p.m.



Raise your hand (or use *9 if calling from a phone) to provide stakeholder comment.

Feel free to state your name, if interested.

Participants have two (2) minutes to speak.

Participants are allowed to speak once per Stakeholder Comment Period.

Comment collection and not an engagement method.

Comments must remain on topic.



Stakeholder Comment Period

5:00 p.m. - 6:00 p.m.



CITY OF LOS ANGELES DEPARTMENT OF
CANNABIS
REGULATION

REMINDER

Upcoming:

Cannabis Regulation
Commission Meeting
Thursday, May 20, 2021
Begins at 2:00 p.m.

Access via DCR homepage, or
Cannabis Regulation
Commission menu.



Stakeholder Comment Period

5:00 p.m. - 6:00 p.m.



Raise your hand (or use *9 if calling from a phone) to provide stakeholder comment.

Feel free to state your name, if interested.

Participants have two (2) minutes to speak.

Participants are allowed to speak once per Stakeholder Comment Period.

Comment collection and not an engagement method.

Comments must remain on topic.



Stakeholder Comment Period

5:00 p.m. - 6:00 p.m.



SPARK Virtual Meeting Room Now Available!

- RSVP for future SPARK Sessions.
- Watch past SPARK Sessions.
- Utilize SPARK Resource Station.
- Take a SPARK Survey.
- Provide feedback in the SPARK Comment Box.



Access the Virtual Meeting Room from the DCR website's SPARK landing page.



Stakeholder Comment Period

5:00 p.m. - 6:00 p.m.



Raise your hand (or use *9 if calling from a phone) to provide stakeholder comment.

Feel free to state your name, if interested.

Participants have two (2) minutes to speak.

Participants are allowed to speak once per Stakeholder Comment Period.

Comment collection and not an engagement method.

Comments must remain on topic.



Stakeholder Comment Period

5:00 p.m. - 6:00 p.m.



SPARK Virtual Meeting Room Now Available!

- RSVP for future SPARK Sessions.
- Watch past SPARK Sessions.
- Utilize SPARK Resource Station.
- Take a SPARK Survey.
- Provide feedback in the SPARK Comment Box.



Access the Virtual Meeting Room from the DCR website's SPARK landing page.



Stakeholder Comment Period

5:00 p.m. - 6:00 p.m.



Raise your hand (or use *9 if calling from a phone) to provide stakeholder comment.

Feel free to state your name, if interested.

Participants have two (2) minutes to speak.

Participants are allowed to speak once per Stakeholder Comment Period.

Comment collection and not an engagement method.

Comments must remain on topic.



Stakeholder Comment Period

5:00 p.m. - 6:00 p.m.



CITY OF LOS ANGELES DEPARTMENT OF
**CANNABIS
REGULATION**

Sign-Up for the SPARK Email List!

Get all the latest
SPARK news, direct
access to the Virtual
Meeting Room and
additional updates
from DCR.

Sign-up link on the
SPARK Landing Page
on the DCR website.

LOS ANGELES

Alert Services Directory

CITY OF LOS ANGELES DEPARTMENT OF
**CANNABIS
REGULATION**

SPARK

Enter the SPARK Virtual Meeting Room to provide DCR with feedback and input that will help us shape the future of cannabis policy and programs here in Los Angeles.

Coming Soon!

AVAILABLE NOW!

SPARK

The Department of Cannabis Regulation (DCR) is dedicated to engaging with community members to better serve them and meet their needs. Throughout the next few months, DCR will be engaging with members of the community through an interactive and informative citywide outreach campaign named, SPARK.

SPARK is a multifaceted program that lets community members engage with DCR through a variety of methods, including virtual events, comments, surveys and informational collateral. Enter the [Virtual Meeting Room](#) or use the links below to learn more about different SPARK STATIONS:

- **SPARK SESSIONS:** A series of virtual events led by local leaders and stakeholders focused on different topics each session. Topics include Licensing and Regulation, the Social Equity Program, Corporate Social Responsibility, and Community Impact.
- **SPARK RESOURCE:** Information stations that include relevant Fact Sheets and FAQs about DCR, our programs, policies, and general cannabis activity information.
- **SPARK SURVEYS:** Substantive surveys will provide us with direct feedback from all of you on current policies and programs and ways we can improve upon certain services.
- **SPARK COMMENT BOX:** A community comment box that allows anyone to provide feedback on 'all things cannabis' in the community.

Community participation is vital to the growth and development of our City's services, policies, and programs. Through SPARK, communities can share input that will help inform the Department of Cannabis Regulation as we make future cannabis policy and programming recommendations to the Mayor and City Council. We look forward to seeing you SPARK change in our community.

SPARK SESSIONS Calendar
Next SPARK SESSION, Saturday, May 8, 2021 (Social Equity Program).

SPARK COMMENT BOX
Available through June 30, 2021!

Stakeholder Comment Period: 5:00 a.m. - 10:00 a.m.

Session Time: 10:00 a.m. - 11:00 a.m.

Get SPARK Email Updates!
Stay Connected to SPARK!



Stakeholder Comment Period

5:00 p.m. - 6:00 p.m.



Raise your hand (or use *9 if calling from a phone) to provide stakeholder comment.

Feel free to state your name, if interested.

Participants have two (2) minutes to speak.

Participants are allowed to speak once per Stakeholder Comment Period.

Comment collection and not an engagement method.

Comments must remain on topic.



Stakeholder Comment Period

5:00 p.m. - 6:00 p.m.



CITY OF LOS ANGELES DEPARTMENT OF
CANNABIS
REGULATION

City of Los Angeles Complaint Portal

- Complaints about unlicensed or illegal commercial cannabis activity
- Complaints about licensed commercial cannabis activity that you are concerned may be happening in an unlawful or unsafe manner
- Non-emergency communications with the Los Angeles Police Department about cannabis or cannabis-related activities. If this is an emergency please call 9-1-1.



Stakeholder Comment Period

5:00 p.m. - 6:00 p.m.



Raise your hand (or use *9 if calling from a phone) to provide stakeholder comment.

Feel free to state your name, if interested.

Participants have two (2) minutes to speak.

Participants are allowed to speak once per Stakeholder Comment Period.

Comment collection and not an engagement method.

Comments must remain on topic.



Stakeholder Comment Period

5:00 p.m. - 6:00 p.m.

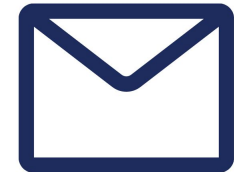


Contacting the Department of Cannabis Regulation

Applicant and Licensees should contact DCR through the following methods:

Send an EMAIL to DCRLicensing@lacity.org.

Call (213) 978-0738 to speak to a DCR representative.



Non-applicants and licensees with questions should contact DCR through the following methods:

Send an EMAIL to Cannabis@lacity.org.

Call (213) 978-0738 to speak to a DCR representative.



Stakeholder Comment Period

5:00 p.m. - 6:00 p.m.



Raise your hand (or use *9 if calling from a phone) to provide stakeholder comment.

Feel free to state your name, if interested.

Participants have two (2) minutes to speak.

Participants are allowed to speak once per Stakeholder Comment Period.

Comment collection and not an engagement method.

Comments must remain on topic.





SPARK Session #3 (Licensing and Regulation)  **SPARK**

SPARK Sessions Recording Disclaimer



The Department of Cannabis Regulation (DCR) is recording this meeting by audio and visual means. By continuing with this meeting, you consent to this recording and acknowledge that the Department of Cannabis Regulation owns the recording and may use or reproduce it in any manner it deems necessary. If you do not consent to being recorded, please discontinue your participation in this meeting.



Welcome and Introduction(s)

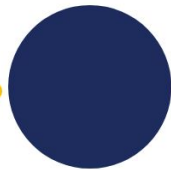
SPARK Updates



CITY OF LOS ANGELES DEPARTMENT OF
CANNABIS
REGULATION



Collect Feedback



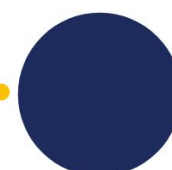
Analyze Feedback



Create Report



Develop / Present
Recommendations



Action by Council &
Council Committee(s)



Welcome and Introduction(s)



**CANNABIS
REGULATION
COMMISSION**





Poll Question!

Which of the following best describes you?
Please select all that apply.

City of Los Angeles Licensing and Regulatory Program



Poll Question!

How would you describe your familiarity with the
City of Los Angeles's commercial cannabis laws
and regulations?

Licensing and Regulatory Program



- Local Laws and Regulations
 - Measure M
 - Cannabis Tax Rates
 - Department and Commission Authority
 - Cannabis Procedures Ordinance
 - Rules and Regulations
 - Cannabis Location Restrictions
- License Application Procedures and Resources
- Additional Resources



Local Laws and Regulations



In March 2017, Measure M, passed in the City of Los Angeles by more than 80% of voters, giving the City Council the full authority to regulate cannabis-related activity within the City of Los Angeles. With that authority, the Department of Cannabis Regulation was established by ordinance on July 30, 2017.



Cannabis Business Taxes



CITY OF LOS ANGELES DEPARTMENT OF
CANNABIS
REGULATION

Classification (Monthly)	Activities Taxed	Tax Rate
L711 - Medical Cannabis Sales	All sales related to medical use cannabis by Retail or Microbusiness operations.	\$50 per \$1,000 in Gross Receipts
L712 - Adult-Use Cannabis Sales	All sales related to adult or recreational cannabis use by Retail or Microbusiness operations.	\$100 per \$1,000 in Gross Receipts
L713 - Cannabis Transportation	Transportation or delivery of cannabis products.	\$10 per \$1,000 in Gross Receipts
L714 - Cannabis Testing	Activities related to the testing of cannabis products.	\$10 per \$1,000 in Gross Receipts
L716 - Cannabis Cultivation	Wholesale sales related to the cultivation of cannabis.	\$20 per \$1,000 in Gross Receipts
L718 - Cannabis Miscellaneous	Sales related to all other cannabis activities such as manufacturing and packaging.	\$20 per \$1,000 in gross Receipts



Department of Cannabis Regulation (DCR)



CITY OF LOS ANGELES DEPARTMENT OF
**CANNABIS
REGULATION**

The Department of Cannabis Regulation (DCR) is responsible for administering the commercial cannabis licensing and regulatory program established by the Los Angeles City Council. Specifically, DCR processes all applications for commercial cannabis licenses in the City of Los Angeles, makes licensing decisions or licensing recommendations to the Cannabis Regulation Commission, and regulates the operations of licensed commercial cannabis businesses in the City.



Cannabis Regulation Commission (CRC)



The Cannabis Regulation Commission was established by ordinance on July 30, 2017 and holds a number of important roles in cannabis licensing in the social equity program in Los Angeles.





Poll Question!

Have you attended a Cannabis Regulation
Commission meeting previously?

Cannabis Procedures Ordinance



The Cannabis Procedures establish the manner in which the Department and Commission are required to process commercial cannabis license applications and further establish requirements of commercial cannabis applicants and licensees.

The Cannabis Procedures authorize the Department and Commission to issue licenses for the following commercial cannabis activity types: cultivation, manufacturing, distribution, testing, retail and delivery.

The City of Los Angeles also established a Licensing and Social Equity Program that enumerates various restrictions related to licensing and application processing.



Cannabis Procedures Ordinance



On July 1, 2020, the Los Angeles City Council approved an ordinance which comprehensively amends, clarifies and re-organizes portions of Article 4, Chapter X of the Los Angeles Municipal Code. The ordinance became effective upon publication.



Rules and Regulations for Cannabis Procedures



- Definitions
- Licenses
- Application Procedures
- Additional Requirements for Specific Businesses
- Inspections
- Notices
- Issuance of License and Hearings
- Proposition M Priority Processing
- Appeal Procedures
- Operational Requirements and Violations
- Renewals and Cancellations
- Administrative Violations, Penalties and Appeals
- Social Equity Program
- Financial Grant Program
- Fee Deferral and Fee Waiver Program



Cannabis Location Requirements



The City of Los Angeles restricts where Commercial Cannabis Activity may lawfully occur. The City restricts Commercial Cannabis Activities to specific zones.

Sensitive use restrictions include but may not be limited to following:

- A licensed retail storefront must be outside of a 700-foot radius of a School, Public Park, Public Library, Alcoholism or Drug Abuse Recovery or Treatment Facility, Day Care Center, Permanent Supportive Housing, and any other licensed storefront retailer.
- A licensed non-storefront retailer (delivery), distributor, cultivator, non-volatile manufacturer or testing lab must be outside of a 600-foot radius of any School.
- A volatile manufacturer must be outside of a 600-foot radius of any School and a 200-foot radius of any Residentially Zoned Property.





Poll Question!

Have you applied for a City of Los Angeles
commercial cannabis license or Temporary
Approval?



Poll Question!

Follow-Up: Which City of Los Angeles commercial cannabis license(s) have you applied for?

Please select all that apply.

State Licensing



In order to participate in Commercial Cannabis Activity within the City of Los Angeles, both a state license and a local license are required.



City of Los Angeles Licensing Program



Licensing Phases

Phase 1

- Existing Medical Marijuana Dispensaries (EMMDs)
- January 2018

Phase 2

- EMMD supply chain
- August 2018

Phase 3

- New Businesses - Social Equity Applicants & General Applicants
- P3RR1 (SEAs) - September 2019
- General Applicants - October 2020



Licensing Program: Application and Licensing Processing Restrictions



CITY OF LOS ANGELES DEPARTMENT OF
CANNABIS
REGULATION

License Type	License CAP	Are Applications Currently Being Accepted?	Application Processing Restrictions	Comments
Testing	No	Yes	No	Application processing opened on October 20, 2020.
Distribution	No	Yes	No	Application processing opened on October 20, 2020.
Non-Volatile Manufacturing	No	Yes	No	Application processing opened on October 20, 2020.
Volatile Manufacturing	Yes	No	No	
Cultivation	Yes	No	No	
Delivery	No	Yes	Yes. Limited to Social Equity Applicants until January 1, 2025 (Phase 3)	SEAs must be verified. SEAs may be verified under the original eligibility criteria or the expanded eligibility criteria. Application processing opened on October 20, 2020.
Retail	Yes	No	Yes. Limited to Social Equity Applicants until January 1, 2025 (Phase 3 Round 2)	Licenses are limited per CPA. To apply in a CPA that has reached Undue Concentration, eligibility must be verified pursuant to LAMC Sections 104.20(b) and 104.06.1(c)(3) before submitting a PCN Request. A lottery will be administered to determine which eligible SEAs are selected to apply for a License in a CPA that has not reached Undue Concentration. SEAs must be verified pursuant to LAMC Sections 104.20(b) and 104.06.1(c)(3) before being determined eligible to participate in the lottery.





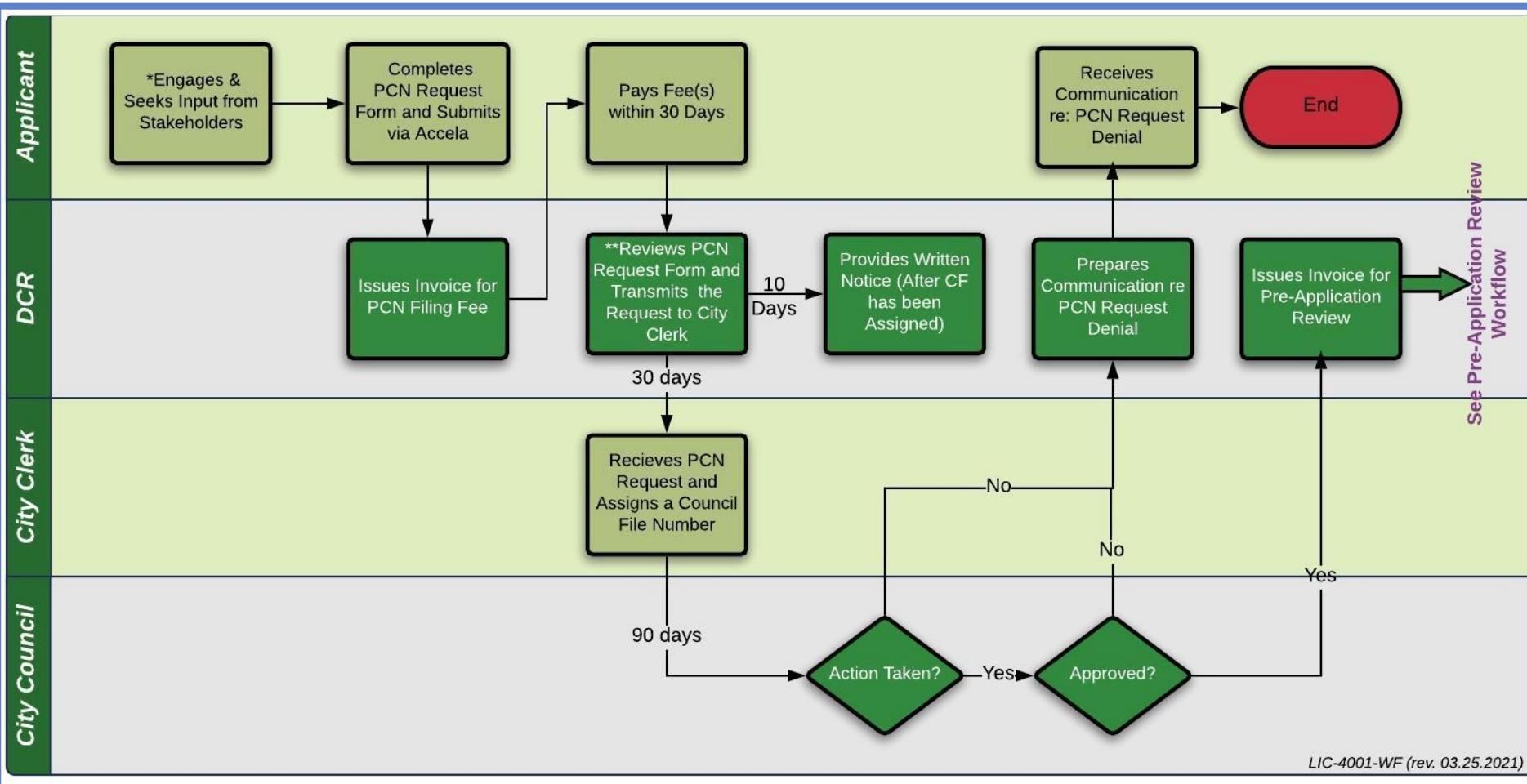
Poll Question!

Do you have familiarity with any of the following topic areas? Select all that you are familiar with.

Public Convenience or Necessity (PCN) Process



CITY OF LOS ANGELES DEPARTMENT OF
CANNABIS
REGULATION



PCN Stakeholder Input



CITY OF LOS ANGELES DEPARTMENT OF
**CANNABIS
REGULATION**



STAKEHOLDER INPUT REQUEST

LIC-4002-FORM

Instructions: Please complete and submit this form to each stakeholder as required per Los Angeles Municipal Code Section 104.03(a)(4).

Date: _____

To: _____
(Name of Stakeholder, i.e. Sherman Oaks NC)
Stakeholder Type _____

Attention: _____
(Contact)

RE: CITY COUNCIL TO CONSIDER REQUEST FOR PUBLIC CONVENIENCE OR NECESSITY (PCN) FINDING; COUNCIL FILE NO. _____

Dear Stakeholder,

Pursuant to Los Angeles Municipal Code (LAMC) Section 104.03(a)(4), an Applicant seeking to apply for a Commercial Cannabis Activity License in a Community Plan Area that has reached Undue Concentration, as defined in LAMC Section 104.01(a)(48), is required to engage with and seek input from your agency/organization as part of the PCN process.

On _____, a PCN Request Form was submitted to the Department of Cannabis Regulation (DCR). After DCR reviews the PCN Request Form and all applicable fees are paid, the request will be transmitted to the City Council. The City Council will either approve or deny the request.

If you would like to submit any comments and/or documents to the City Council pertaining to this request, you may do so at: [LACouncilComment.com](https://www.lacouncilcomment.com).

Please be advised that while key stakeholders may make recommendations on potential operating conditions, conditions may only be imposed by the Department of Cannabis Regulation or Cannabis Regulation Commission upon issuance of a License to address public safety concerns. (LAMC §§ 104.06(a)(3)(ii), 104.06 (b).)

Stakeholder Input Request

Information regarding the proposed Commercial Cannabis Activity associated with this PCN request:

Business Premises Location: _____

Community Plan Area: _____ CD: _____

Applicant Name: _____

Applicant's Phone No. _____; Email: _____

Total Floor Area of Business: _____ square feet

Proposed Hours of Operation: _____ Days: _____

_____ Days: _____

_____ Days: _____

Applicant's representative (contact info):

If you have any questions, please contact the following individual:

Name: _____

Phone: _____

Email: _____

Applicant's Signature _____

Date _____



Public Convenience or Necessity (PCN) Requests



All PCN Requests have been transmitted to the City Clerk:

- Central City (25)
- Central City North (5)
- Harbor Gateway (3)
- Sherman Oaks/Studio City (6)
- Sun Valley/La Tuna Canyon (5)
- Venice (3)

Notice of Public Convenience or Necessity (PCN) Application Filing can be found on the DCR website in the licencing menu, under “Public Notice”.

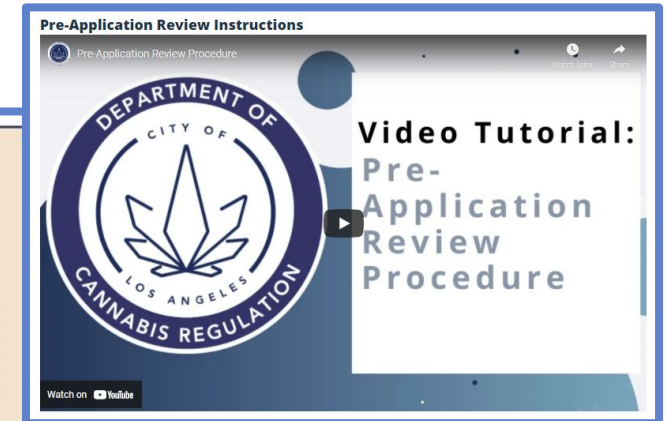
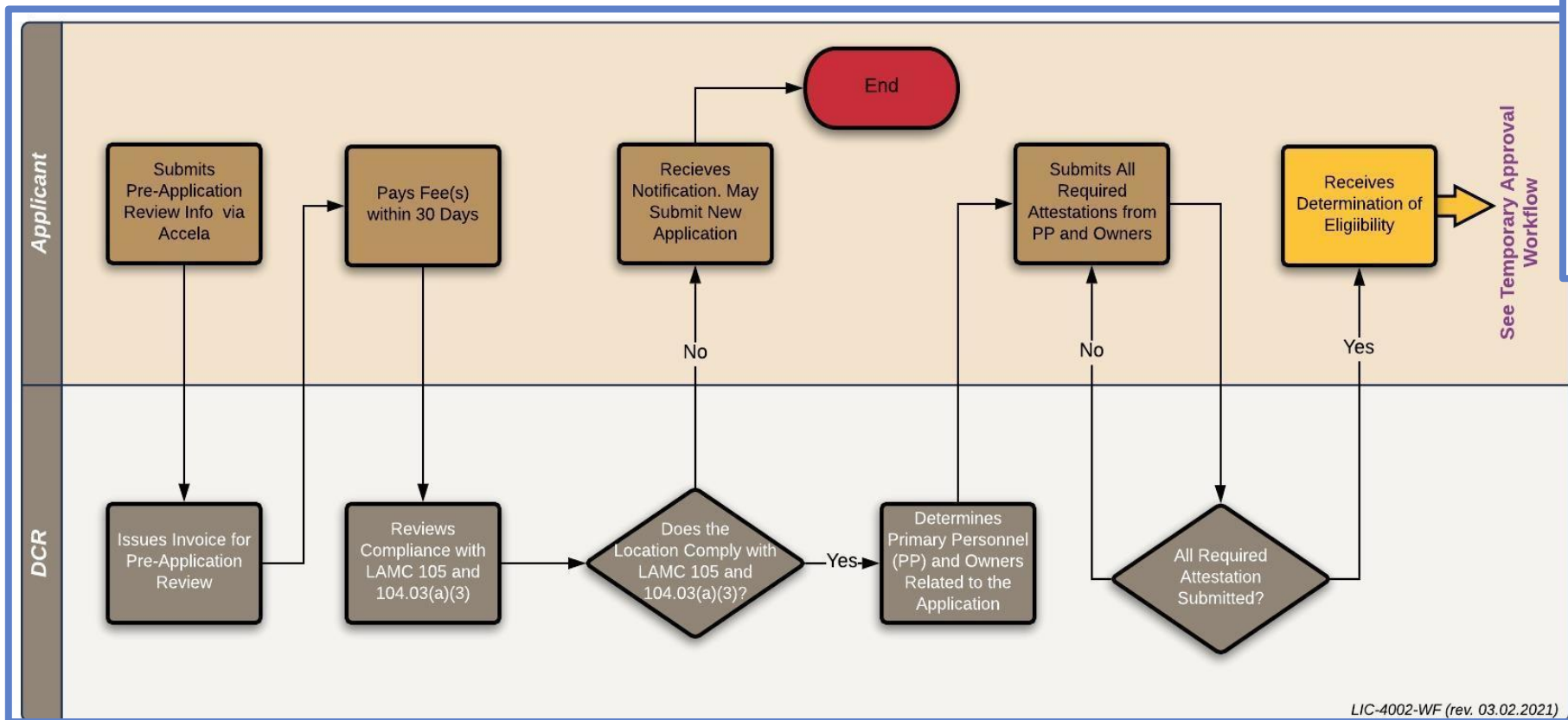
<https://cannabis.lacity.org/licensing/licensing-information/public-notice#PCN>



Pre-Application Review Procedure



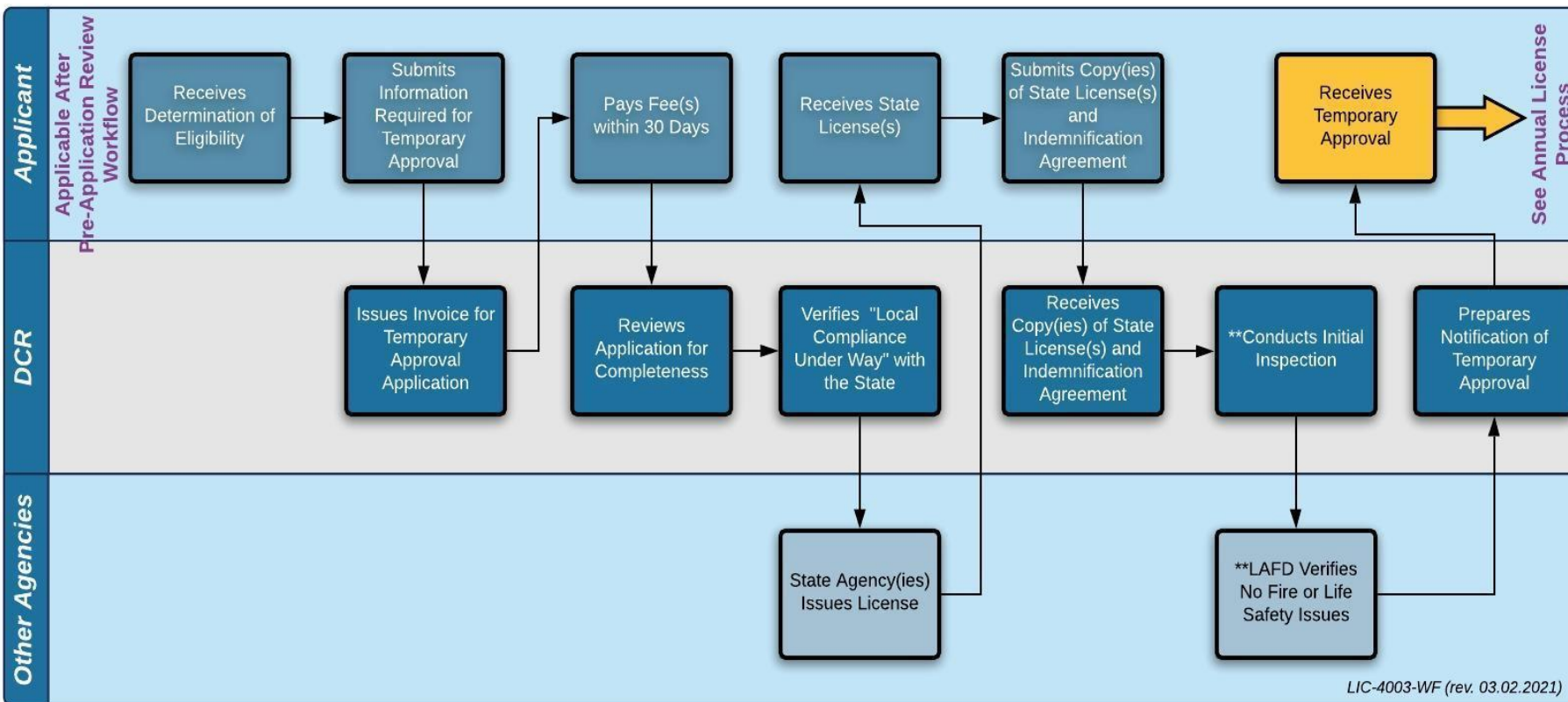
CITY OF LOS ANGELES DEPARTMENT OF
**CANNABIS
REGULATION**



Temporary Approval Procedure



CITY OF LOS ANGELES DEPARTMENT OF
CANNABIS
REGULATION



Application Process



In order to have a valid application before the department the following needs to occur:

1. If necessary, City Council must make a PCN finding;
2. The Individual pays the Pre-Application Filing Fee and submits the required Pre-Application documents via Accela (DCR Licensing Portal);
3. DCR determines compliance with land use regulations and ownership restrictions;
4. DCR determines that the application is eligible for further processing; and
5. The Temporary Approval Filing Fee is paid.





CITY OF LOS ANGELES DEPARTMENT OF
CANNABIS
REGULATION



Poll Question!

Please indicate which topics you would like to receive more information about.

Please select all that apply.



Licensing Program: Licensing Data



462 Commercial Cannabis Businesses have Temporary Approval to operate in the City of Los Angeles. A breakdown of the licensed activities is provided in the table below:

No. of Temporary Licenses Issued to Licensed Businesses (Many Businesses hold more than one License)						
Retail Storefront	Delivery Only	Non-Volatile Manufacturing	Distribution	Cultivation	Testing Lab	TOTAL
191	0	266	305	311	2	1,075



Licensing Program: Annual Licensing Process



CITY OF LOS ANGELES DEPARTMENT OF
CANNABIS
REGULATION

Temporary Approval**

- Land Use Compliance
- Ownership Restrictions
- Initial Inspection
- Payment of Temporary Approval Application Filing Fee
- Subject to Annual Renewal Fees (Sept -Nov)

Annual License**

- Temporary Approval
- Live Scan
- CEQA Clearance
- Community Meeting (Retail, Non-Retail 30,000 sf or larger)
- Commission Meeting (Retail, Non-Retail 30,000 sf or larger)
- Final Inspection
- Payment of Annual Application Filing Fee
- Subject to Annual Renewal Fees (Sept -Nov)

** Possession of a Temporary Approval or Annual License does not waive or circumvent other requirements or necessary permits from the City or other public agencies, including but not limited to a Permits from the Department of Building and Safety, Fire Department and Los Angeles County Department of Health.

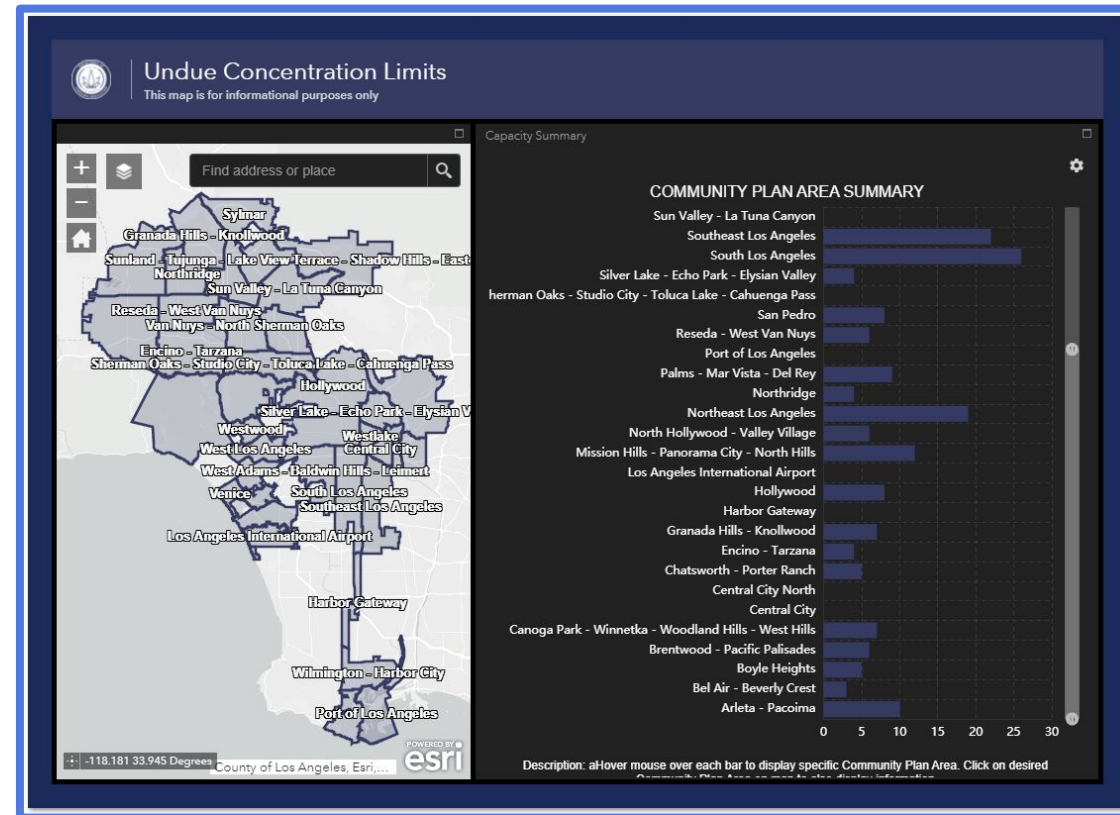


Licensing Program: Licensing Map



CITY OF LOS ANGELES DEPARTMENT OF
CANNABIS
REGULATION

DCR encourages all potential applicants, licensees, and those looking for a licensed cannabis business to utilize DCR's Licensing Map. This map shows the locations of all retail locations that have received Temporary Approval to operate.



Additional Resources: DCR Website: Laws & Policy



A screenshot of the City of Los Angeles Cannabis Regulation website. The header includes the "LOS ANGELES" logo, the "CITY OF LOS ANGELES DEPARTMENT OF CANNABIS REGULATION" text, and navigation links for "Update on coronavirus", "311 City Services", and "LA City Directory". The main navigation bar contains "About", "Laws & Policy", "Licensing", "Social Equity Program", "Personal Activity", and "Complaint Portal". A red box highlights the "Laws & Policy" dropdown menu, which is open and displays a table of links. The table has three columns: "Local Law", "Regulations & Policies", and "Specific LAMC Sections". The "Local Law" column lists "General Information", "Department & Commission Authority", "Cannabis Procedures", "Cannabis Location Restrictions", "Cannabis Advertising", and "Cannabis Taxation". The "Regulations & Policies" column lists "Rules and Regulations for Cannabis Procedures", "Administrative Hearing Procedures", and "Additional Licensing and Permitting Agency Resources". The "Specific LAMC Sections" column lists "Cannabis Fees and Fines", "License Renewal", "Social Equity Program Application Processing", and "Social Equity Program". Below the table, there are links for "California", "City of Los Angeles", and "County of Los Angeles".



Additional Licensing Resources: DCR Website: Licensing



A screenshot of the City of Los Angeles Cannabis Regulation website. The header includes the "LOS ANGELES" logo, the "CITY OF LOS ANGELES DEPARTMENT OF CANNABIS REGULATION" logo, and navigation links for "About", "Laws & Policy", "Licensing", "Social Equity Program", "Personal Activity", and "Complaint Portal". A red box highlights the "Licensing" dropdown menu, which is open and displays three columns of links: "News and Updates" (including Licensing Updates, PCN, Phase 1, Phase 2, Phase 3 Non-Retail, Phase 3 Retail Round 1, Phase 3 Retail Round 2, and Testing Labs), "Licensing Information" (including General Overview, Public Participation, Public Notice, Application Procedures and Resources, Application Forms and Documents, Fees and Fines, Licensing Map, Apply for a License, and Video Tutorials), and "Inspections and Compliance" (including Virtual Inspections and Initial Inspection (Temporary Approval)). The background of the website shows a large cannabis leaf graphic and the text "Click here to SPARK". At the bottom, there are three small images of cityscapes.



Additional Licensing Resources: California Cannabis Portal



A screenshot of the California Cannabis Portal website. The header includes the CA.GOV logo, social media icons, and navigation links: News, Contact Us, and Settings. Below the header is a navigation bar with icons and labels for About Us, Licensing, Laws & Regulations, Consumers, Resources, and Search. The main content area features a large image of cannabis plants with a dark overlay containing the word "Licensing" and a brief description of the portal's purpose. A "Learn More" button is positioned below the text. At the bottom of the page, there is a banner for "CALIFORNIA ALL" and "COVID-19 UPDATES" with the tagline "Your Actions Save Lives". The footer text reads "Welcome to the California Cannabis Portal!".



Additional Resources



CITY OF LOS ANGELES DEPARTMENT OF™
**CANNABIS
REGULATION**

CITY OF LOS ANGELES
**DEPARTMENT OF
CANNABIS REGULATION**
NEWS BULLETIN



FROM THE DESK OF
EXECUTIVE DIRECTOR,
CAT PACKER



Greetings!

As the Executive Director of the Los Angeles Department of Cannabis Regulation (DCR), I want to thank you for your interest in the City's cannabis related policies and programs. We are striving to create community and culture that is intentionally more responsible and more equitable regarding cannabis and its various impacts.

We need everyone's voice to create a vision for what we want to see, how we want to live, and where we want to be as a society in relation to the cannabis industry. Through collective leadership and learning, we can build a bridge between all parties so we can continue to grow one of the country's largest regulated cannabis markets.

This year will be defined by the work we accomplish. It is my goal to work with legislators and stakeholders to make critical policy changes that will allow the Social Equity Program flourish and to build and sustain deeper communication and engagement with our social equity applicants. In addition, I seek to improve these efforts with the local cannabis industry generally and to make the application and licensing process more simple and streamlined across government agencies both for existing operators and new applicants.

As one of the first and largest jurisdictions to authorize both medical and adult use commercial cannabis activity, we have, over the last two years learned many lessons, and having received tremendous feedback from stakeholders we know that we have much to accomplish in this new year.

I look forward to continuing this journey with all of you. Let's dedicate 2020 to creating a clear, collective vision for cannabis in the City.

Thank you,

Executive Director, Cat Packer



INFORMATION AND PROCEDURE BULLETIN

LIC-4003-IPB

September 22, 2020

TEMPORARY APPROVAL PROCEDURE

Los Angeles Municipal Code ("LAMC") Section 104.01(a)(47) defines Temporary Approval as a DCR-issued temporary license that authorizes an Applicant to engage for a limited period of time in Commercial Cannabis Activity as would be permitted under the privileges of a non-temporary license of the same type. An Applicant with Temporary Approval is required to follow all applicable Rules and Regulations as would be required if the Applicant held a non-temporary License of the same type.

This bulletin, in conjunction with the Temporary Approval Workflow [\[LIC-4003-WF\]](#), provides general information and the procedures and requirements for an Applicant to obtain a Temporary Approval to engage in Commercial Cannabis Activity in the City of Los Angeles. In order to begin the Temporary Approval Process, an Applicant must first go through the Pre-Application Review Process [\[LIC-4002-IPB\]](#), [\[LIC-4002-WF\]](#) and obtain a determination of eligibility from DCR.

Overview of Responsibilities

Applicant Responsibilities:

- After receiving a determination of eligibility from DCR, upload the Temporary Approval application information and, if applicable, follow the procedures in the Social Equity Program - Entity Verification Information and Procedure Bulletin.
- Pay the Temporary Approval Application Fee.
- Pay additional fees, if any, for DCR to review documents that must be re-submitted.
- Obtain authorization from the applicable [State licensing authority](#) to conduct the Commercial Cannabis Activity(ies).
- Prepare for and schedule the Initial Inspection with DCR.
- Prepare for the LAFD Inspection.
- Resolve any deficiencies which may be discovered during an inspection, and/or schedule a follow-up inspection.
- Pay the Standard Inspection Fee if an additional inspection is necessary by DCR.

DCR Actions:

- Issue invoice for the Temporary Approval Application Fee and any other fees associated with additional document review or additional inspection fees, if applicable.
- Review application for completeness and communicate any deficiencies to the Applicant for resubmittal.
- Perform the Initial Inspection and communicate any deficiencies to the Applicant in writing.
- Communicate with LAFD regarding inspection.
- Verify local authorization with the applicable State licensing authority.
- Grant or deny Temporary Approval authorization.

¹ This document is intended to serve as an informational guide only. It does not replace or supersede the Los Angeles Municipal Code and does not constitute legal advice. This document is subject to change and may not constitute the most up-to-date or complete information. Applicants are encouraged to conduct their own due diligence and research to ensure that they are in compliance with all legal requirements.

Department of Cannabis Regulation
221 N. Figueroa Ave., Suite 1245, Los Angeles, CA 90012
(213) 978 - 9738 : cannabis@lacity.org
www.cannabis.lacity.org

How to Register to Submit Modifications Requests

Watch later Share



Watch on YouTube





Poll Question!

How would you prefer to receive information from
the Department?

Upcoming SPARK Events and Engagement



The next SPARK SESSION will be held Saturday, May 15, 2021 (Community Impact)

- Stakeholder Comment Period: 9:00 a.m. - 10:00 a.m.
- SPARK Session #4: 10:00 a.m. - 11:00 a.m.
- RSVP available in Virtual Meeting Room.

SPARK SURVEYS and SPARK COMMENT BOX are available **through June 30, 2021.**



Upcoming Events

Visit the DCR website for additional event information and to RSVP.

EVENT	DAY	DATE	STAKEHOLDER COMMENT PERIOD	TIME
SPARK Session (Community Impact)	SATURDAY	5/15/2021	9 A.M. - 10 A.M.	10 A.M. - 11 A.M.
SPARK Session (Licensing and Regulation)	WEDNESDAY	5/26/2021	5 P.M. - 6 P.M.	6 P.M. - 7 P.M.
SPARK Session (Corporate Social Responsibility)	THURSDAY	6/3/2021	5 P.M. - 6 P.M.	6 P.M. - 7 P.M.
SPARK Session (Social Equity Program)	TUESDAY	6/8/2021	5 P.M. - 6 P.M.	6 P.M. - 7 P.M.
SPARK Session (Community Impact)	SATURDAY	6/12/2021	5 P.M. - 6 P.M.	10 A.M. - 11 A.M.



Stay Connected to SPARK!



SPARK Virtual Meeting Room

DCR Website

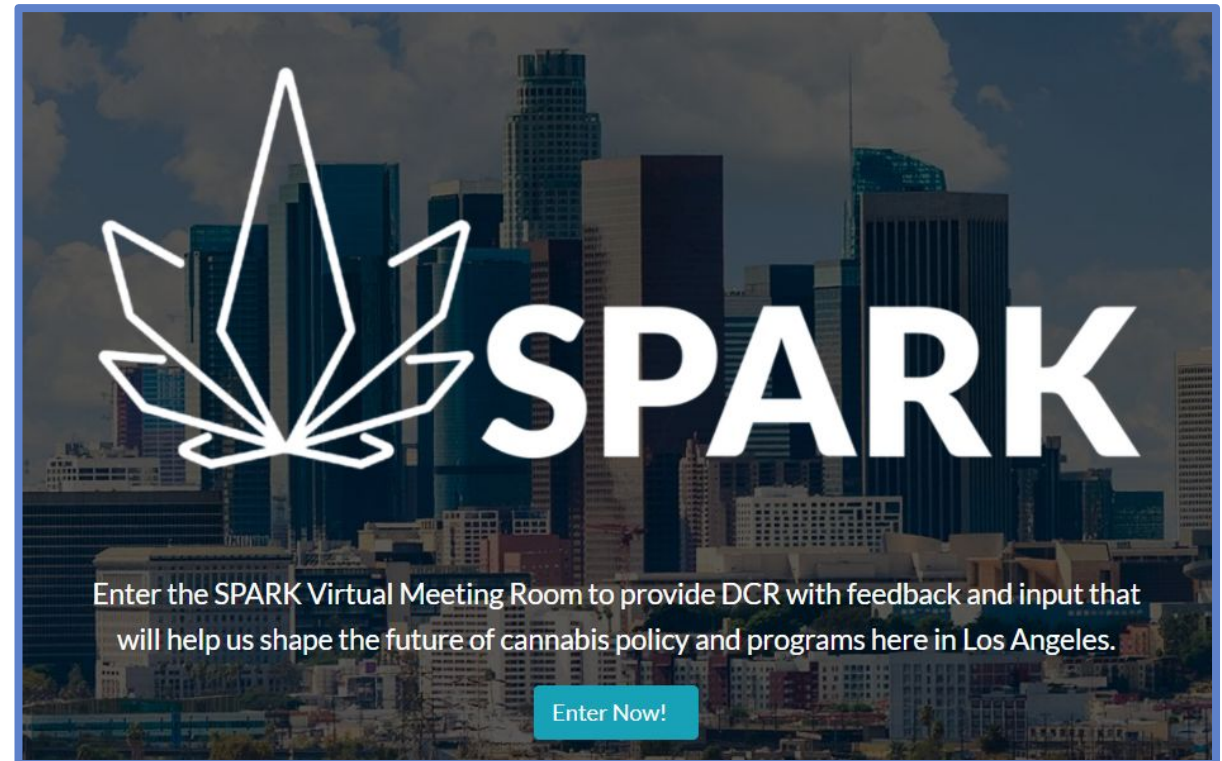
DCR Email Blast

SPARK Comment Box

SPARK Surveys

SPARK Sessions

NEW Email List



Closing Remarks

