

# Navigating DCR's Licensing Map



CITY OF LOS ANGELES DEPARTMENT OF  
**CANNABIS  
REGULATION**



CITY OF LOS ANGELES DEPARTMENT OF  
**CANNABIS  
REGULATION**

# Welcome!

## We will begin momentarily.

# Table of Contents



CITY OF LOS ANGELES DEPARTMENT OF™  
**CANNABIS  
REGULATION**

- I. Welcome & opening remarks
- II. Retail & Pending Locations vs. Map of Licensed Retailers
- III. Navigating the [Retail & Pending Locations map](#)
  - A. How to use the “layers” feature
- IV. Navigating the [Map of Licensed Retailers](#)
- V. Q & A
- VI. Resources

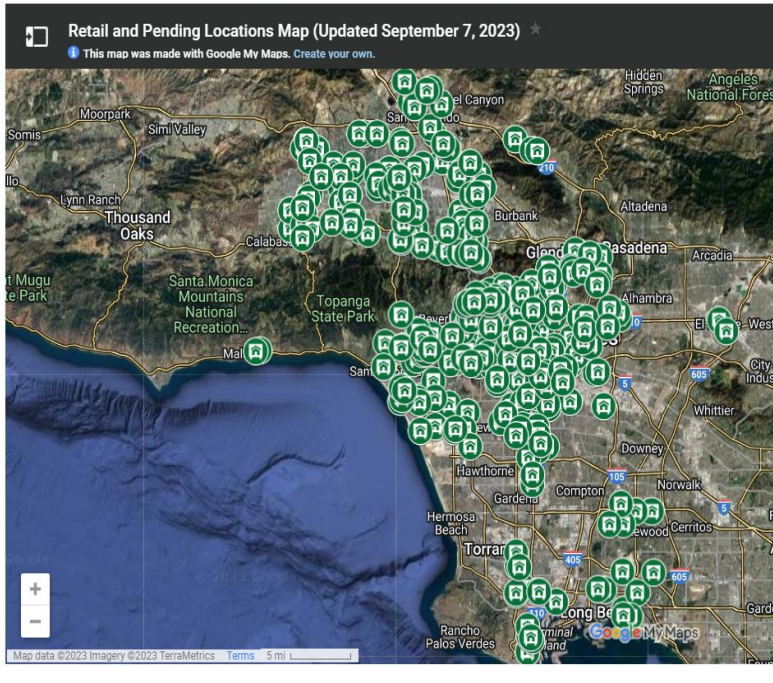


# Retail & Pending Locations map

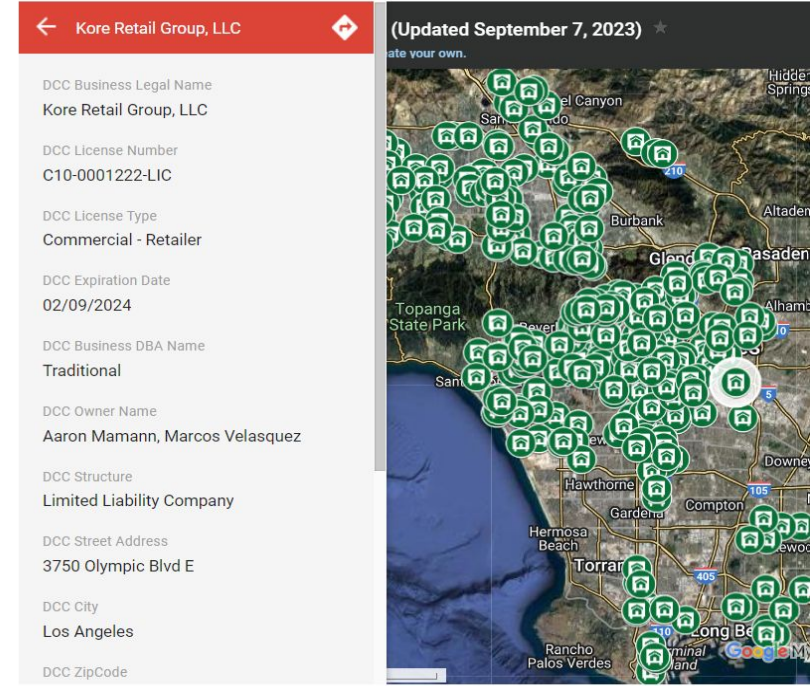


CITY OF LOS ANGELES DEPARTMENT OF  
**CANNABIS  
REGULATION**

## Retail and Pending Locations Map



## Retail and Pending Locations Map



# Map of Licensed Retailers



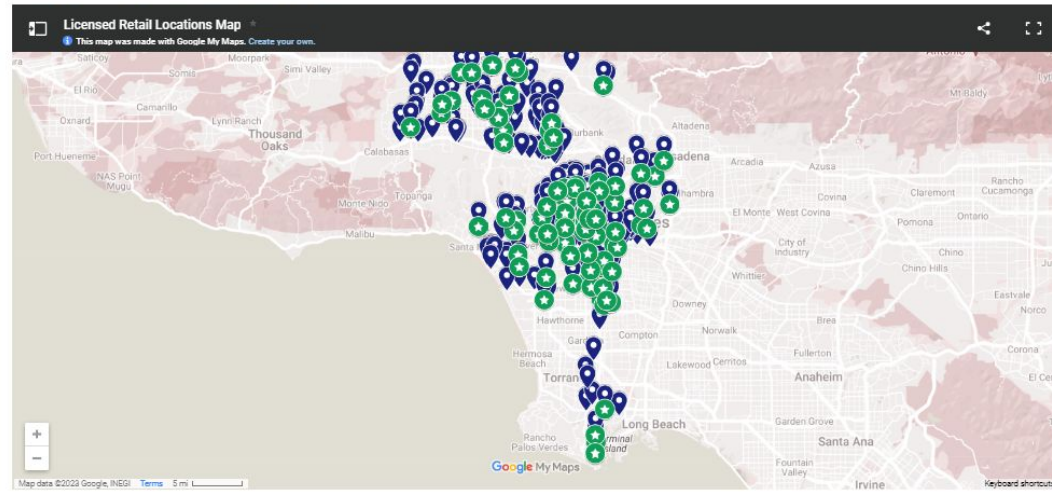
CITY OF LOS ANGELES DEPARTMENT OF  
**CANNABIS  
REGULATION**

Home > Personal Activity > Find Licensed Retailers

## Map of Licensed Retailers

Within the City's new regulatory program, businesses must obtain local authorization to engage in commercial cannabis activity. This page will feature a comprehensive list and map of all businesses with Temporary Approval or a License to sell Medicinal or Adult-Use cannabis and cannabis products.

## All Licensed Retail Locations





CITY OF LOS ANGELES DEPARTMENT OF™

**CANNABIS  
REGULATION**

# Q & A



# Resources



CITY OF LOS ANGELES DEPARTMENT OF  
**CANNABIS  
REGULATION**

## Links:

DCR's website: [cannabis.lacity.gov](https://cannabis.lacity.gov)

[Retail & Pending Locations map](#)

[Map of Licensed Retailers](#)

Submit complaints 050124/7 via [Complaint Portal](#)

## Contact information:

Public Service Counter: Tuesdays and Wednesdays from 10:00 AM to 3:00 PM

Telephone: 213-978-0738 Monday through Thursday from 10:00 AM to 4:00 PM